



# Motorised Lens Turret Camera

CODE: MTURVIP4KS3-VG-A



Motorised Zoom Lens



People & Vehicle Detection



50m IR Range



Built-In Microphone

## Camera

Image Sensor	1/2.8" CMOS
Video Compression	H.265+ / H.265 / H.264+ / H.264
Resolution	8MP, 6MP (1 to 20fps), 5MP, 2K, 2MP (1 to 25fps)
Electronic Shutter	1s to 1/100,000s
Minimum Illumination	0.032 lux at F1.2 (AGC on); 0.05 lux at F1.4 (AGC on); 0 lux with IR
IR Range	50m
Lens	2.8mm to 12mm
Field of View	<b>Horizontal:</b> 104.7° to 32.5° <b>Vertical:</b> 72.2° to 18.6° <b>Diagonal:</b> 112.2° to 37°
Focus	Motorised
Image Correction	BLC, HLC, WDR, Defog, Digital NR

## Interfaces

Network	RJ45
Audio	1CH audio input; 1CH built-in microphone
Storage	Micro SD card slot (supports up to 256GB)
Reset Button	Yes

## Functions

Remote Monitoring	SuperLive Plus Mobile App / NVMS (used with Viper NVR)
Online Connection	Simultaneous multi-stream real time transmission
Maximum Users for Monitoring	Up to 10 users (simultaneous)
Network Protocol	UDP, IPv4, IPv6, DHCP, NTP, RTSP, RTP, RTCP, ICMP, IGMP, PPPoE, DDNS, SMTP, FTP, SNMP, HTTP, 802.1x, UPnP, HTTPs, QoS
Interface Protocol	ONVIF



# Motorised Lens Turret Camera

CODE: MTURVIP4KS3-VG-A

IP

8<sup>4K</sup>  
MP

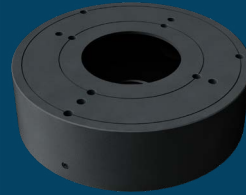
## Functions (continued)

Alarm Events	Video Motion Detection, Video Exception, SD Card Error, SD Card Full
AI Events	Line Crossing Detection, Scene Change Detection, Intruder Detection
Additional Functions	Watermark, Video Mask, Heartbeat, Password Protection, Image Distortion Correction

## Parameters & Dimensions

Power Supply	DC12V / PoE
PoE	IEEE802.3af
Power Consumption	< 10W
Operating Environment	Temperature: -30°C to +60°C; Humidity: Less than 95% (non-condensing)
Dimensions	Ø111.5mm x 99.6mm
Weight	0.623kg
Installation	Ceiling or wall mounted
Protection Grade	IP67
Certificate	UKCA, CE, FCC, PSTI 2023, RoHS, WEEE, REACH (EC1907/2006)

## Compatible Accessories



**Cable Management Ring**  
CODE: VIP-RING-04-GR



**Cable Management Ring**  
CODE: VIP-RING-06-WH