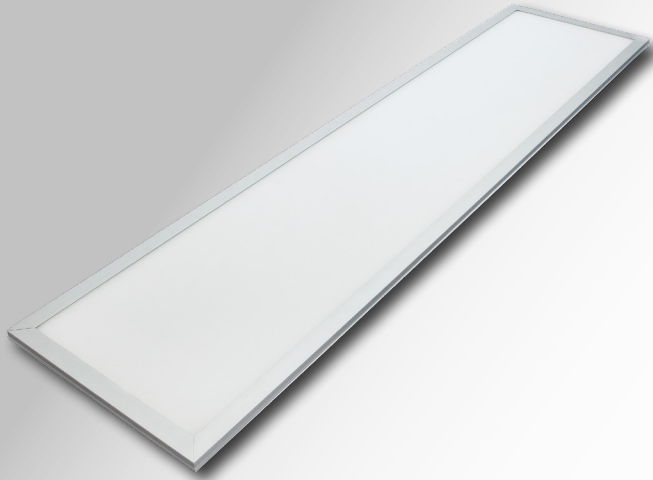


LYNX RECESSED MODULAR (12x3)

LYNX-ADV30-12X3NW/QD



LIGHTING & SECURITY



| | | |
|-------|------------------|-----------------------------------|
| TP(a) | 30W POWER | 5YR WARRANTY 1YR ON-SITE |
| IP44 | OPAL DIFFUSER | 3900 LUMENS |

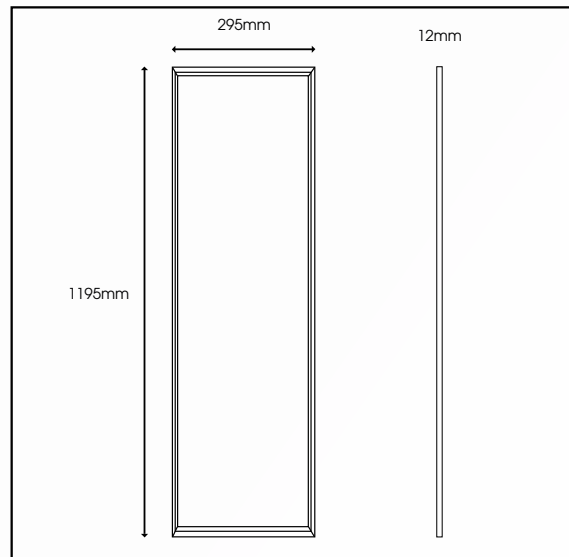
Q-DRIVE

Driver Manufacturera

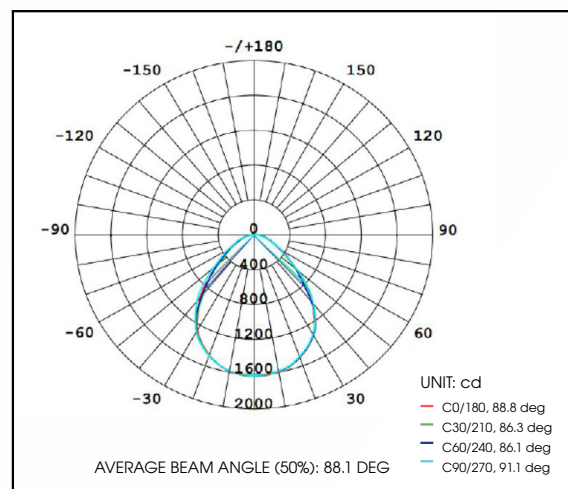


LED's inside

TECHNICAL DRAWINGS



LUMINOUS INTENSITY DISTRIBUTION DIAGRAM



| Specification | Lynx Advance 12x3 |
|------------------------|--|
| System Power | 30W |
| Driver Manufacturer | Q-Drive |
| LED Chipset | Samsung |
| Diffuser | Opal |
| Colour Rendering Index | >85 |
| Typical UGR | <19 |
| LED Efficacy | 130 Lm/cW |
| Lumen Output | 3900Lm |
| Fire Rating | TP(a) |
| Dimmable | Dall / Switch-Dim / 1-10V |
| Power Factor | 0.95 |
| IP Rating | IP44 |
| Beam Spread | 160 ° |
| Colour Type | Single |
| Colour Temperature | 4000K |
| Housing Material | High Grade 6063 Aluminium |
| Light Guide Plate | PMMA |
| Operating Temperature | -20 to 50 °C |
| Input Voltage | AC 200-240V, 47-63Hz |
| Weight | 2.7kg |
| Dimensions | 1195mm x 295mm x 12mm |
| MacAdam Step | <3 |
| Lifetime | 50,000 hours, L70-B10 (Ta 25 °C) |
| CE Standards | EN60598-1, EN 60598 2-2, EN62493, EN55015, EN61547, EN61000-3-2, EN61000-3-3, EN62722-1, EN62722-2-1 and EN50581 |
| CE Directives | LVD, EMC, ERP & RoHS |

* Warranty terms and conditions apply



SWITCH DIM



1-10V

For further information on our products or terms and conditions visit our website www.qvisled.com or email: sales@qvislighting.com

MODULAR & RECESSED RANGE