

Luna Tri-Colour Wall Pack

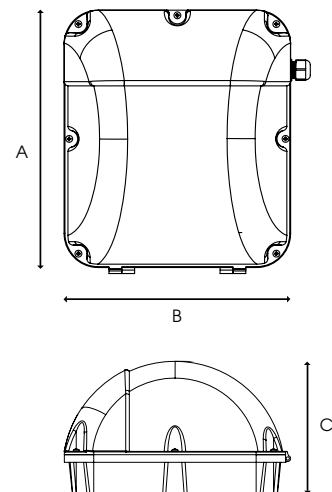
External Range

CODE: LUNA-40TC

QVIS[®]
LED LIGHTING



TECHNICAL DRAWINGS

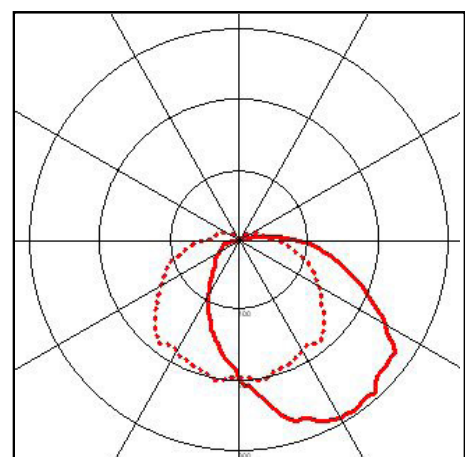


A = 308mm C = 182mm
B = 288mm

Specification	Luna
System Power	40W
Driver Manufacturer	Tridonic
LED Chipset	Samsung
Colour Rendering Index	>80
Lumen Output	4200Lm
LED Efficacy	105 Lm/cW
Energy Saving	Integral PhotoCell Sensor
Power Factor	0.95
IP Rating	IP65
IK Rating	IK10
Colour Temperature	3000K / 4000K / 5000K
Beam Spread	125°
Housing Material	Aluminium
Diffuser Type	Polycarbonate
Operating Temperature	-20 to +65°C
Input Voltage	AC220-240V
Dimensions	308mm x 288mm x 182mm
Weight	2.7kg
MacAdam Step	<3
Lifetime	50,000 hours, L70-B10 [Ta 25 °C]
CE Standards	EN60598-1, EN62493, EN55015, EN61547, EN61000-3-2, EN61000-3-3, EN62722-1, EN62722-2-1 and EN50581
CE Directives	LVD, EMC, ERP & RoHS

* Warranty terms and conditions apply

LUMINOUS INTENSITY DISTRIBUTION



Information is subject to change and can be withdrawn without notice

For further information on our products or terms and conditions visit our website www.qvis.co.uk/lighting or email: sales@qvislighting.com